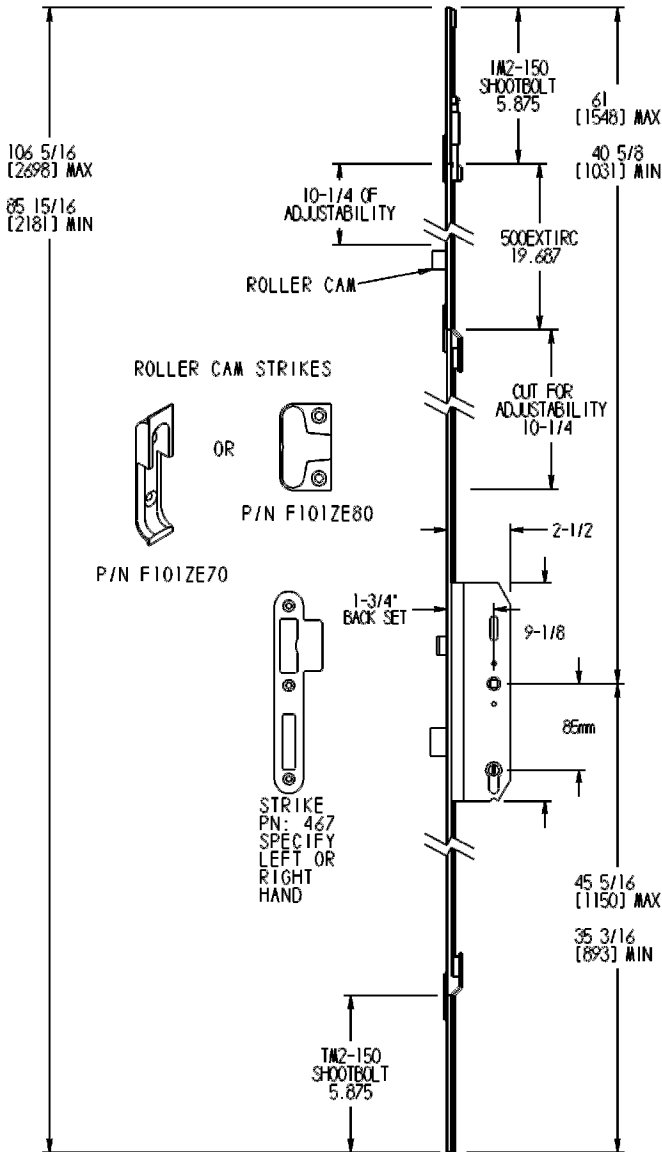
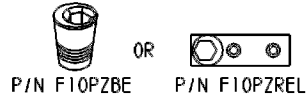


# #7003; 3-Point Entrance Mortise Mechanism Stainless Steel With Roller Cams

EXAMPLE OF 7003 MULTI-POINT ENTRANCE LOCK  
WITH ADD-ON ROLLER CAM EXTENSION.  
(500EXTIRC)



SHOOTBOLT STRIKE



\* ALL DADOE GROOVES MUST BE FREE OF ANY PARTICULATE OR SAWDUST BEFORE AND AFTER INSTALLATION.

\*Four locking points consisting of latch, deadbolt top and bottom shootbolts and roller cam.

\*Use for active door or window.

\*Material: Stainless Steel.

Function: to lock:

\*Lifting the lever up engages deadbolt, roller cam and shootbolts. Turning the cylinder locks all points into place.

To unlock:

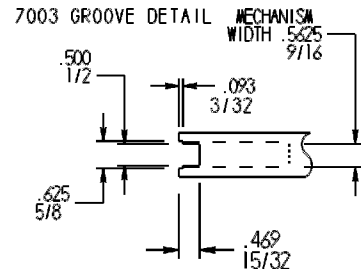
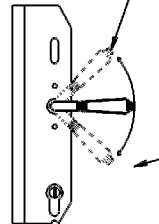
\*Turn cylinder to unlock all points. Pushing the lever down will disengage roller cam, deadbolt and shootbolts. Note latch functions in unlocked position.


\* 1 3/4" (45mm) Backset

Faceplate:

\* 5/8" (16mm) width

\*Minimum height door: 85 15/16 [2181].  
Maximum height door: 106 5/16 [2698].  
w/o add-ons.  
Extensions available for taller doors.  
For 10' doors add two (2) 19 11/16 [500mm] extension with (500 EXTIRC) or without (500 EXT1).  
For doors taller than 10 feet simply add more extensions.





**AMERICAN CYLINDER ADAPTER**  
PART #7000ACA  
CONVERT PROFILE CYLINDER MECHANISMS TO ACCEPT AMERICAN TYPE KEY CYLINDERS HAVING FLAT TAB CYLINDER TAILS.  
\$25  
(SEE PAGE 153)

**Other Hardware Manufacturers Trims that will fit:**  
**Baldwin Door Configuration #D02**  
**Emtek Door Configuration #1**